



SPECIFICATIONS

Single control

Inox

Anti limescale aerator M 18 x 1, flow rate 5 l/min

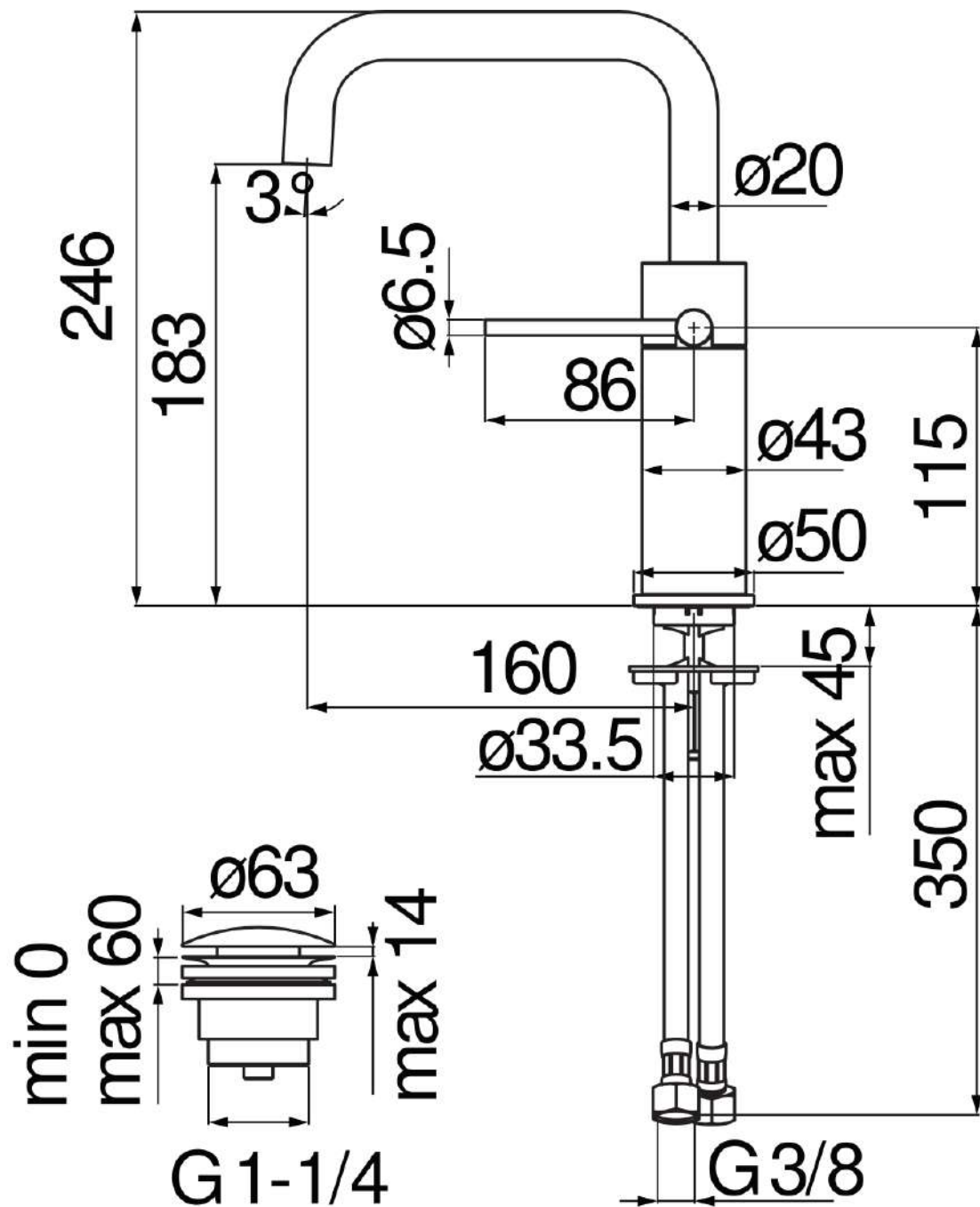
Swivel spout

1 1/4" push waste

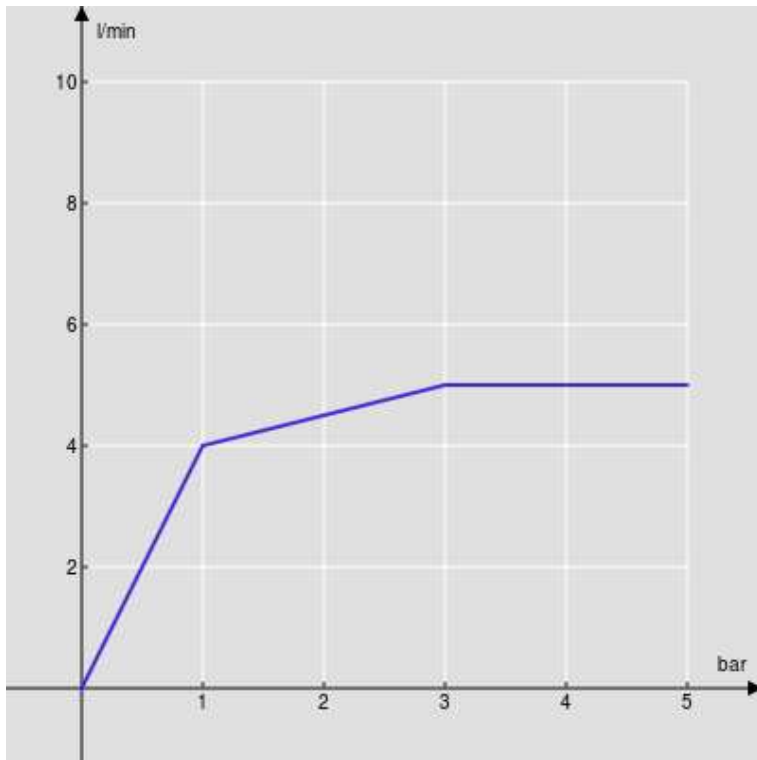
ø 3/8" stainless steel flexible pipe

Energy saving system with cold water side opening

Packaging: 41 x 21 x 7 cm / 0,006027 m³

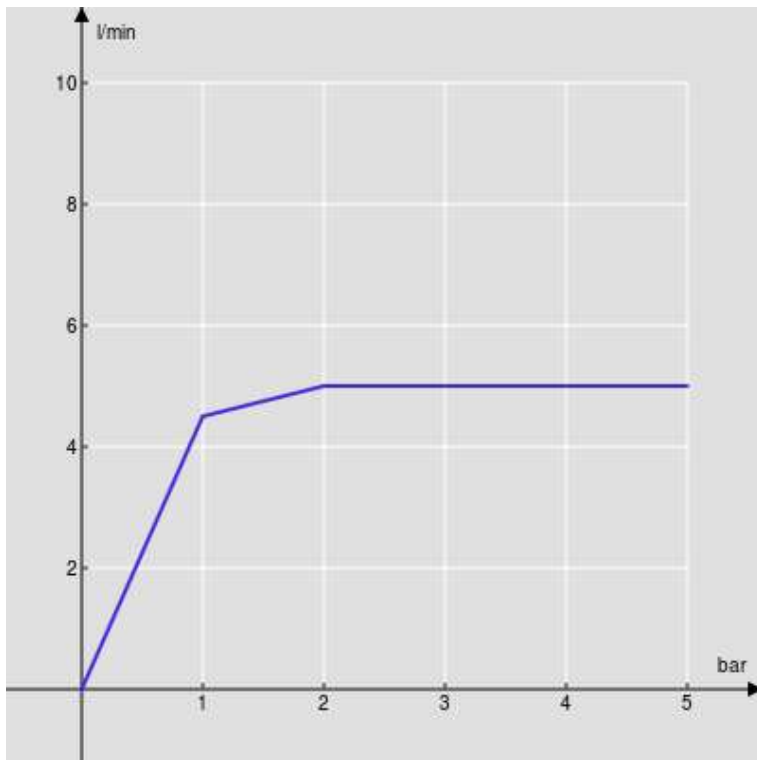


FLOW RATE DIAGRAM: HOT/COLD WATER



— Aerator

FLOW RATE DIAGRAM: MIXED WATER



— Aerator